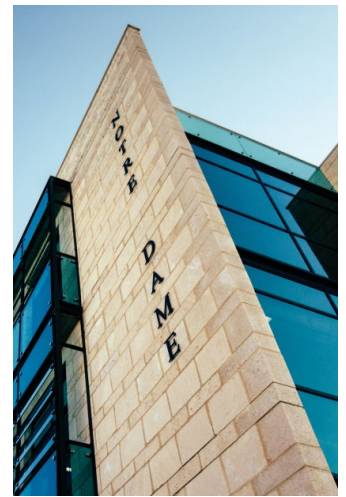


WA Teaching and Learning Forum 2019

General Information sheet for delegates

This information sheet should cover everything you need to know, but if you need help on the day make your way to the Registration desk in Tannock Hall.



Notre Dame [campus map](#) below shows:

- Building ND4 – Tannock Hall of Education building
- Building ND25 – Drill Hall and Courtyard
- The Esplanade park area (in case of an emergency)
- Building ND9 – Manjaree



Fremantle Campus Map



Registration

The registration desk will be located in the foyer of ND4 – the Tannock Hall of Education building (corner Cliff and Croke Street), with tea and coffee on arrival from 8.00am to 8.45am each day.

Guidebook app

This year we are utilising the Guidebook app again for your convenience in selecting and scheduling the sessions and workshops you'd like to attend. You can download the Guidebook from either the App Store (Apple), Play Store (Android) or the website here - <https://guidebook.com/g/tlf2019/>

Program

The final printable program can be found [here](#).

Parking

When parking in Fremantle you can use the [CelloPark](#) application on your smart device, you can download this from the App Store (iPhone) or Play Store (Android). There are many parking bays near The University of Notre Dame, however, if you do park further away you can catch the blue or red CAT Bus to the venue.

Bus and train timetables - Transperth

There are many options to get to Fremantle via public transport, please see <http://www.transperth.wa.gov.au/>. There is also the CAT Buses that run through and around Fremantle, please see <http://www.fremantlewesternaustralia.com.au/fremantle-maps/fremantle-cat-bus-map.htm>.

All City of Fremantle parking information can be found [here](#).

Plenary session venue

The Plenary sessions will be in ND4 lecture theatre – Tannock Hall of Education (corner Cliff and Croke Street) at 8.50am each day.

Forum venues

All other sessions and workshops of the Forum will be held on all levels of ND4 – the Tannock Hall of Education building (corner Cliff and Croke Street).

Emergency exits

In the event of an emergency, please make your way to The Esplanade park area. Please see location indicated on the map on page 1.

Wi-Fi access

Delegates will receive the Wi-Fi guest username and password upon registration.

Twitter and other Social Media

Please use the **#2019TLF** for all your TLF social media posts.

Presenter Audio Visual support

Notre Dame IT students will be available in building ND4 to support presenters in the teaching spaces. Please have your presentation/s on a USB (especially if you have a Mac computer as there are no Mac connections) and upload it to the desktop of the room in which you're presenting either at the beginning of the day or throughout the breaks.

Posters

There will be 9 posters on display in the Drill Hall for you to view during the designated breaks. Those who have posters to display please make your way to the Drill Hall in the morning when you arrive, where the Notre Dame Student helpers will assist you with your posters.

Breaks during the day

We will have a morning tea and lunch break each day, which will be held in the Drill Hall and Courtyard. There will also be comfort breaks throughout the Forum, please see the program for these times.

End of day events



Drinks and nibbles Thu 31 Jan

Please feel free to stay around for light refreshments, held in the Drill Hall Courtyard – ND25, where the famous grazing table will be! Entertainment by Isaac Mangano (Classical guitarist). Please see location indicated on the map on page 1.

Barbecue Fri 1 Feb

Please join us for a barbecue to celebrate the close of the Forum. Entertainment by AQUILA Music. The barbecue will be held in the Drill Hall Courtyard, building ND25. Please see location indicated on the map on page 1.



We look forward to seeing you all there!